

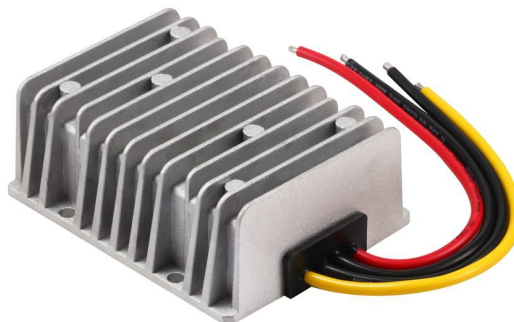


# WH-D08401225 DC-DC转换器

## WH-D08401225 Series DC DC converter

### Summary

- > 额定输出: 功率 300W  
Rated output: power 300W
- > 输入电压: 12/24VDC  
Input voltage: 12/24VDC
- > 线长: 160mm ± 10mm  
Wire Length: 160mm ± 10mm



### General specification

100 × 80 × 38mm

Specification	Model	WH-D08401225
额定输出功率 Rated output power		300W
额定输入电压 Rated input voltage		12V/24VDC
额定输出电压 Rated output voltage		12VDC
输入电压范围 Input voltage range		8V-40VDC
输入启动电压 Input starting voltage		8VDC 100%负载 Load
空载功耗 No-load power consumption		< 0.3W
效率 Efficiency		88%
输出电压 Output voltage		12VDC
输出电流 Output current		25A
电压调整率 Voltage tolerance		1%
负载调整率 Load regulation		3%
纹波电压 Wave(mvp-p)		100mv 外接22UF 电容 ESR<0.1Ω 100KHZ 100mv External 22UF capacitor ESR < 0.1 Ω 100KHZ
过流保护 Over current protection		额定输出情况下, 大于额定电流 120%, 过流保护动作, 限电流降电压, 过流消失后自动恢复 Under rated output conditions, if the current exceeds 120% of the rated current, the overcurrent protection will activate, limiting the current and reducing the voltage. After the overcurrent disappears, it will automatically recover
短路保护 Short circuit protection		等于最大电流 43A 输出电压 0V 自动恢复 Equivalent to maximum current of 43A, output voltage of 0V, automatic recovery
输入—输出 Input—output		非隔离 Non-isolated
防水 Waterproof		全密封防水 Fully sealed and waterproof
尺寸 Dimension		100 × 80 × 38mm
重量 N.W.		500g
冷却方式 Cooling method		自然冷却 Natural Method
额定值温升 Rated temperature rise		45°C
可靠性 Reliability		> 100000h
接线说明 Wire indicator		16AWG 输入正(红色), 输入负(黑色) 18AWG 输出 正(黄色)输出 负 (黑色)引线长度=160mm ± 10mm 16AWG input positive (red), input negative (black); 18AWG output positive (yellow), output negative (black); lead length=160mm ± 10mm

### PIC和安装尺寸

### PIC and installation dimensions

